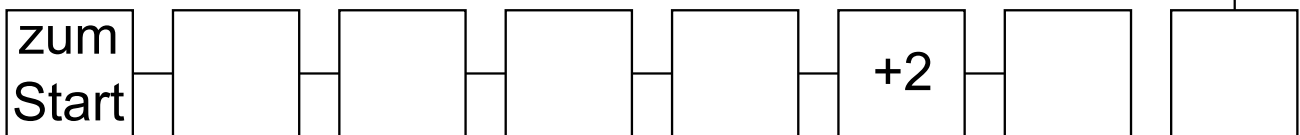
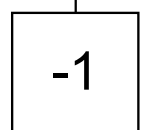
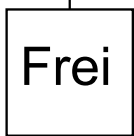
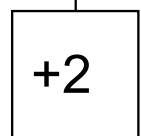
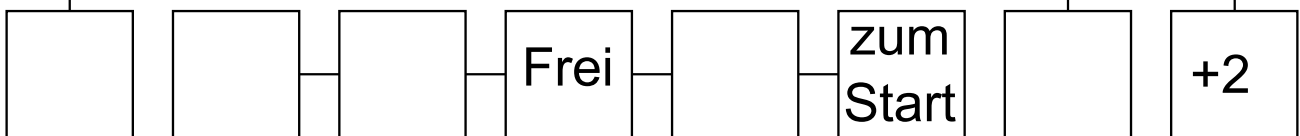
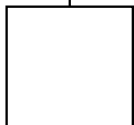


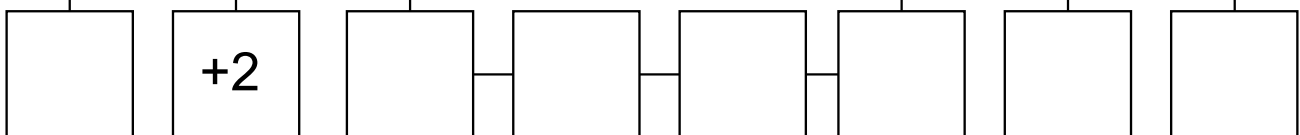
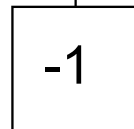
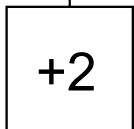
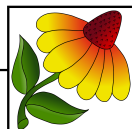
Wer anfangen darf wird vor beginn des Spiels mit dem Würfel ermittelt (höchste Zahl beginnt)



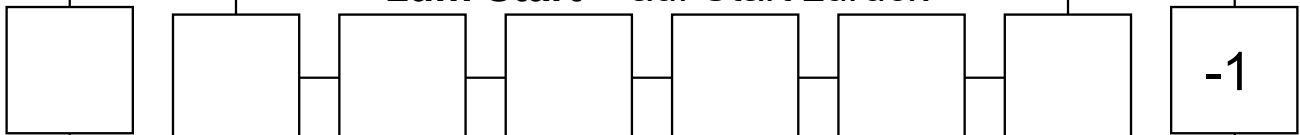
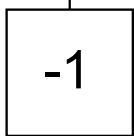
Gewürfelte Augenzahl
= diese Felder vor rücken



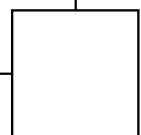
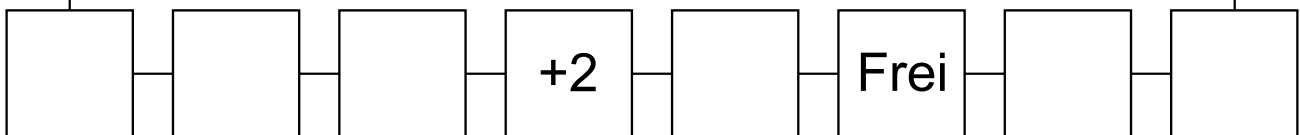
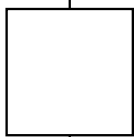
Ziel



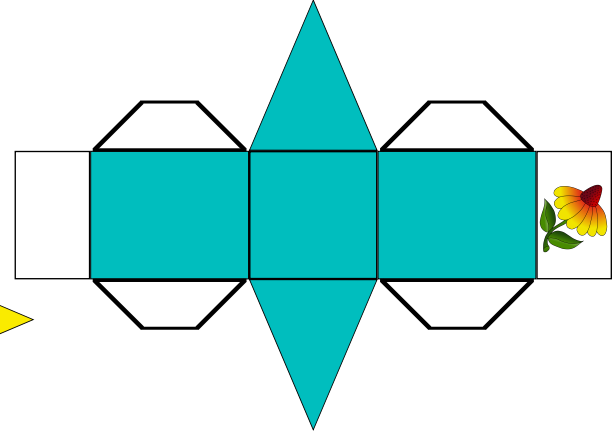
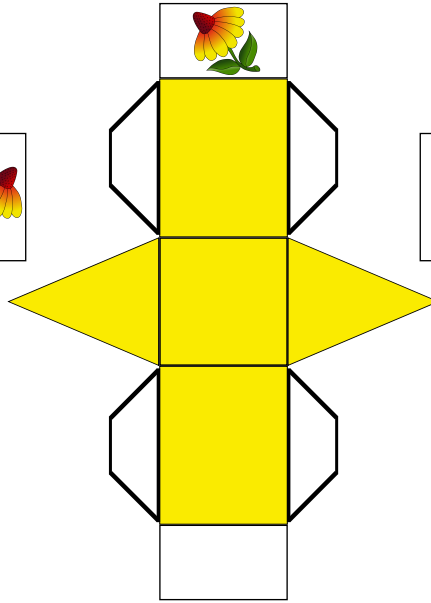
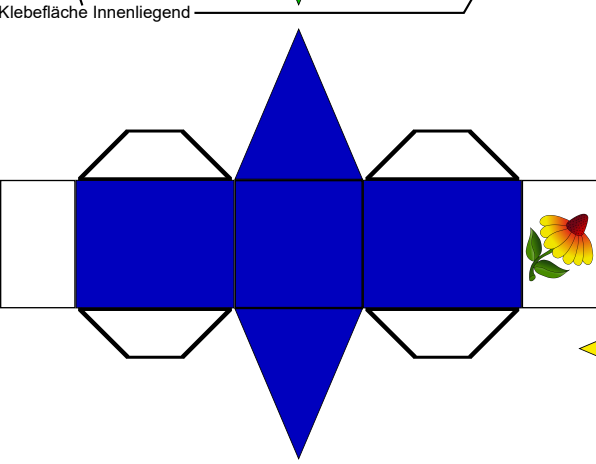
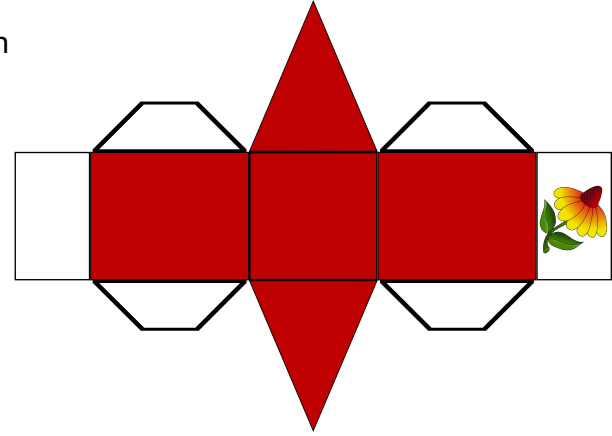
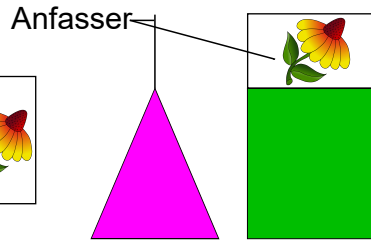
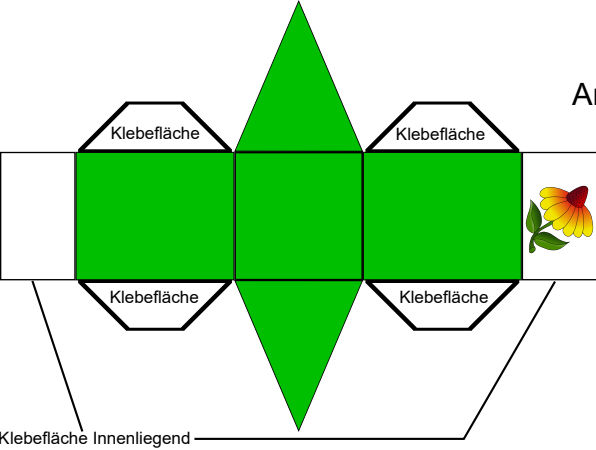
-1 = 1 Feld zurück
+2 = zwei Felder vor
Frei = 1 mal Aussetzen
zum Start = auf Start zurück



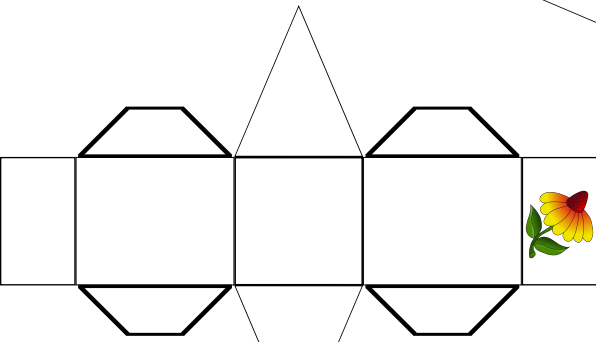
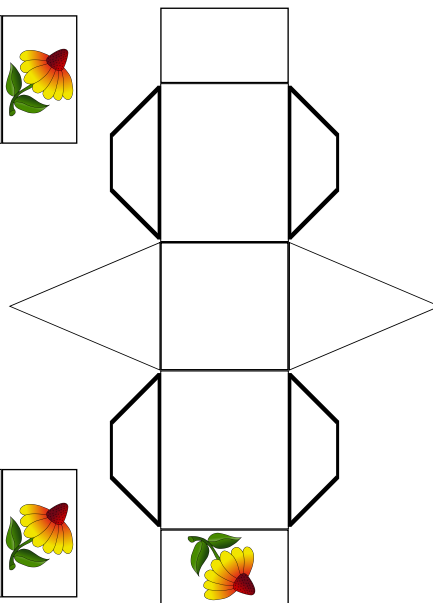
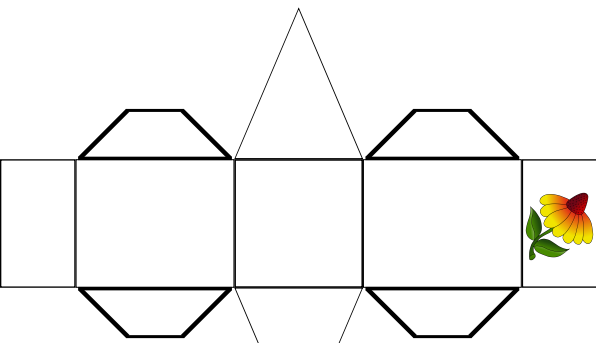
wer als erstes das Ziel (Blume) mit genauer Augenzahl erreicht hat das Spiel gewonnen



Spielfigur nach dem Kleben



Hier können Sie vor oder nach dem Kleben der Figur diese mit eigenen Farben bemalen



Würfel

